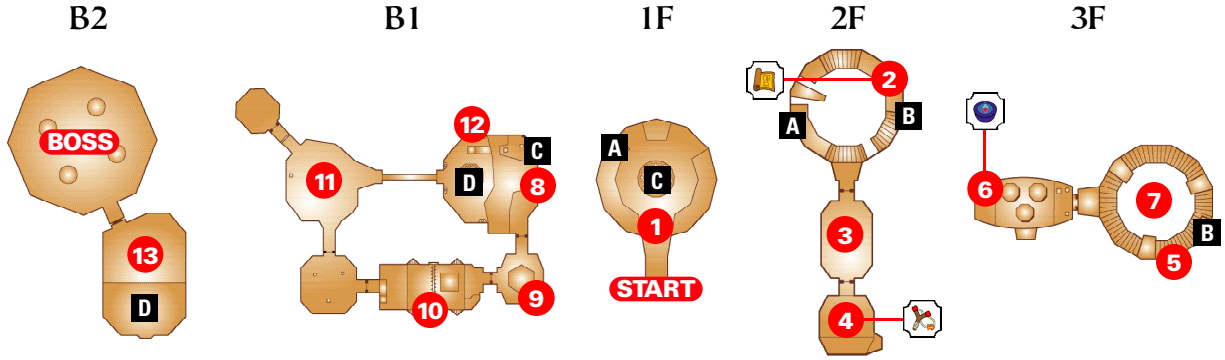




Deku Tree Map



MapKey 1 Strategy Callout A Floor Connection Map Slingshot Compass

1 COLLECT DEKU STICKS

In the first floor entrance destroy the three Deku Baba and collect the Deku Nuts they leave behind. Use your shield to block any Deku Baba lunging attacks and counter-attack with your sword.



2 COLLECT THE MAP

Climb up the ladder to the 2nd floor and jump across the log bridge to the treasure chest and grab the dungeon map. Jump over to the farthest door and enter.



3 DEKU SCRUB RICOCHET

Z-target the Deku Scrub and block its attack with your shield. Once you've ricocheted its shots back at it it'll scurry around and you need to capture it to earn a clue. The doors unlock and you can continue.



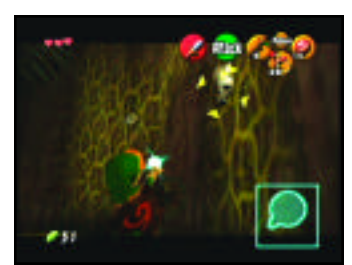
4 COLLECT THE FAIRY SLINGSHOT

Jump down and then climb the vines on the opposite side to grab the slingshot. You can z-target with the slingshot and circle enemies or go into first-person mode by holding the button down and pressing again to fire. Equip the slingshot in an empty slot and in first-person mode target and shoot the hanging ladder above the entrance to provide an exit. Be sure and collect some Deku Seeds from the bushes below before leaving. Head back out to where you found the map.



5 CLIMB VINE-COVERED WALL

Use your slingshot to take out the Skulltulas. You may have to enter first-person mode to get the one high up the wall. Climb up the vines to reach the 3rd floor.



6 COLLECT THE COMPASS

Step on the gold plate to cause the platforms to rise. Jump across to the small treasure chest but watch out for a hanging skulltula at the alcove entrance. Head back to the entrance and use a Deku Stick to light the un-lit torch to reveal a treasure chest on the opposite side. Stand on the gold plate and jump across the platforms to reach it. Collect the compass and head back out.



7 LEAP OF FAITH

On third floor take out the hanging Skulltula that blocks the plank that extends out from the surrounding walkway. Jump out towards the heart and use the controller stick to control your descent so you'll land in the middle of the floor cobweb on the first floor and break through to the basement.



8 CLEANING HOUSE

When you reach the basement climb onto the ledge with the gold plate and press it to activate the torch. Light a Deku Stick and jump into the shallow area of the water and use the flaming Deku Stick to burn away the cobwebs blocking the door. If you need Deku Sticks take out the Deku Baba by freezing it with Deku Nuts and striking with your sword.



9 UNLOCKING THE COMBINATION

Z-target the Deku Scrub and catch it to learn the Deku Scrub Combination you'll need to get to the Boss. The order is middle, right, left. Collect Deku Seeds from the bushes in the room and use your slingshot on the eye above the door to exit.



10 SWITCH IN THE WATER

Jump into the water on the left side and dive down to press the switch under water. This will lower the water level allowing you to cross under the spiked log if you ride the moving platform. This is timed so you must move quickly. Climb out of the water and jump onto the platform to ride under and reach the far shore. Once on the other side use your slingshot to take out the skulltula and pull the block over to make a stairway to reach the exit.



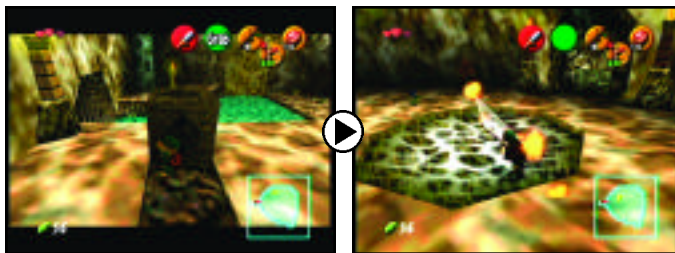
11 LARVAL STAGE

Watch out for the skulltula ready to pounce down right at the entrance. Once it's defeated a Gohma Larva will show up. Watch out for their jumping attacks. Use your slingshot and sword to defeat them. Light a Deku Stick and burn away the cobwebs to continue on.



12 HIGHER GROUND

You'll be in the same room you started in but now on the higher ledge you couldn't reach before. Push the block down into the water to make a way back up. Jump across to the burning torch and light a stick and jump back across using the block you just placed. Attack the cobweb on the floor with the flaming Deku Stick to burn away the hole and drop down.



13 USE DEKU COMBINATION

In the water are heart containers to heal yourself. You'll be facing three Deku Scrubs. This is where the Deku combination comes in handy, Target each of the Deku Scrubs in turn starting with the middle one, then the right one, then the left one. Z-target and bounce their Deku Nuts back at them. They'll reveal that to defeat Queen Gohma you must strike her while she is stunned on the ground. Heal yourself with the remaining hearts in the water or bushes and head off to the bosses chamber.



BOSS BOSS QUEEN GOHMA

When you first enter the Queen's chamber you must go to the center of the room and look upward in first-person mode to spy her yellow eye hiding in the shadows. When Queen Gohma is on the ground use z-targeting or first-person mode with the slingshot to strike her eye when it turns red. This will stun her and allow you to move in with targeted sword attacks. Jumping attacks are good for better damage. Queen Gohma will jump to the ceiling and produce eggs that you can defeat with Deku Nuts before they hatch. Remember to grab hearts and Deku Seeds around the rim from bushes. When the Queen is defeated you'll earn another heart container and can exit the dungeon.



BROUGHT TO YOU BY:

**NINTENDO
POWER**

FOR SUBSCRIPTION INFORMATION, VISIT:
http://www.nintendo.com/news/news_power_promo.jsp