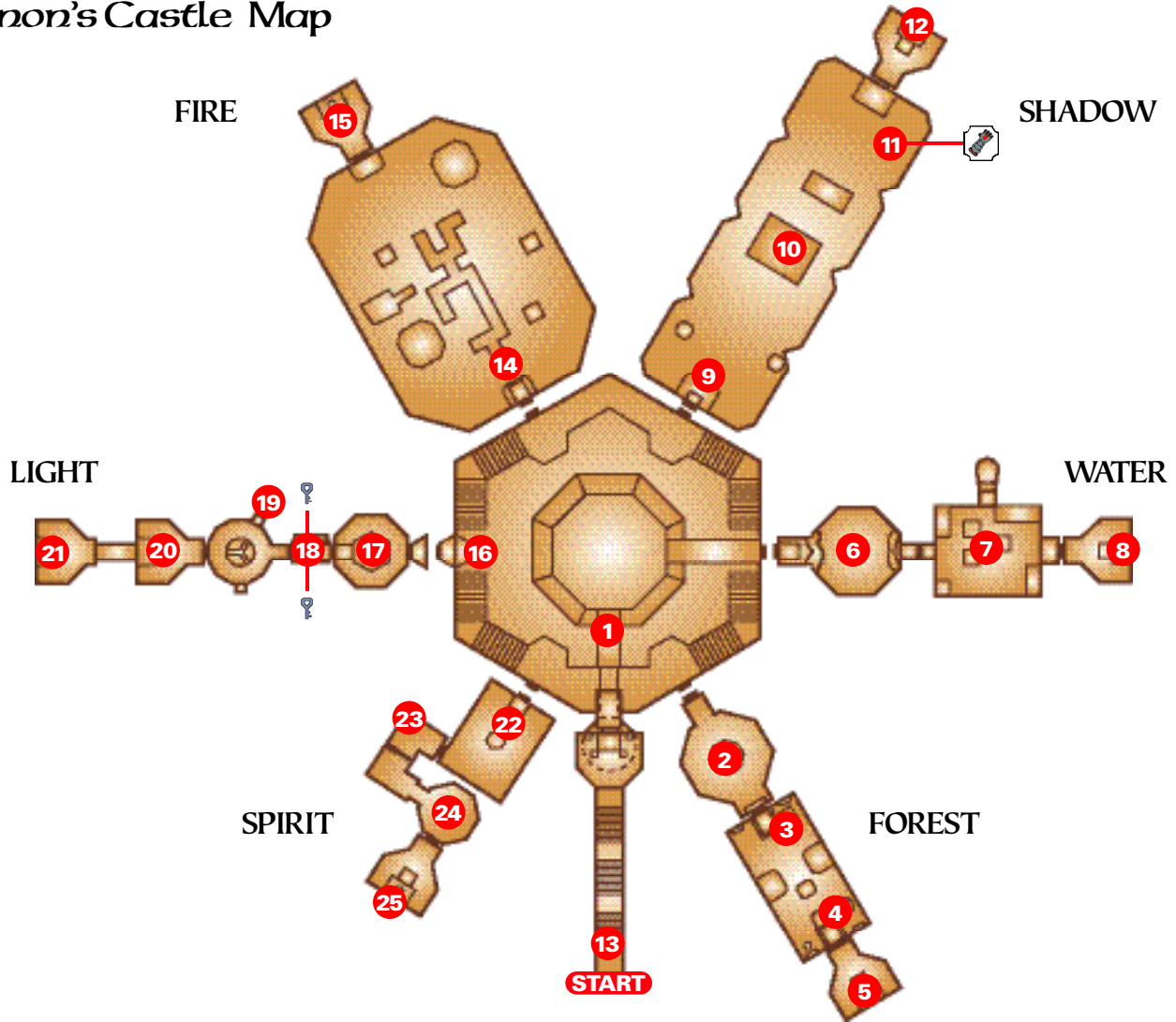




Ganon's Castle Map



MapKey **1** Strategy Callout **A** Floor Connection Golden Gauntlets

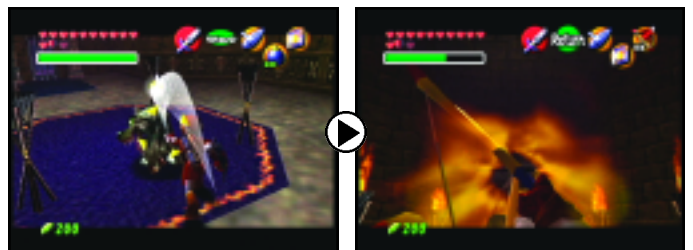
1 BATTLEPREPARATIONS

Head down the hallway, dodge the Beamos and go through the door to reach the interior of Ganon's Castle. Underneath the bridge leading to Ganondorf's Tower, use the Lens of Truth to reveal a secret passage. Inside you will find a group of Fairies surrounded by Deku Scrubs. Deflect the Deku Nuts back at the Deku Scrubs with the Hylian Shield to see what they have for sale. When battle depletes your supplies, revisit this hidden room to stock up again.



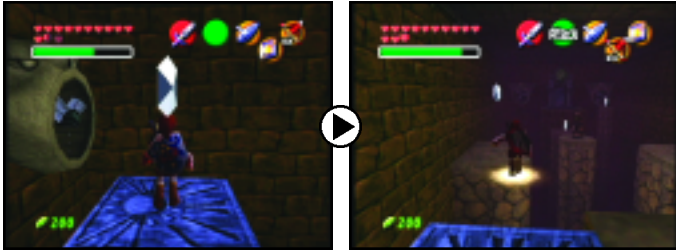
2 FIVE FIRES

Head to the right of the entrance to Ganon's Castle and walk through the door with the Forest Medallion above it. You can work counter-clockwise around Ganon's Castle to finish each chamber branching off of the castle. Inside, eliminate the Wolfos to reveal a small treasure chest. Light the four torches using Din's Fire, then aim a Fire Arrow at the unlit torch above the door to unlock it. The fifth torch needs to be lit before the other four torches burn out. Enter the next room.



3 THE FIRST FEW RUPEES

You need to collect all of the Silver Rupees to unlock the next door. To your immediate left, play the Song of Time to reveal a Time Block underneath the floating Silver Rupee. Wait for the nearby fan to stop blowing before collecting the Silver Rupee, then switch to the Hover Boots and let a blast of air from the fan help push you to the nearby ledge. Take your Hover Boots off and defeat the Beamos with a Bomb, then jump to the other platforms to collect two more Silver Rupees.



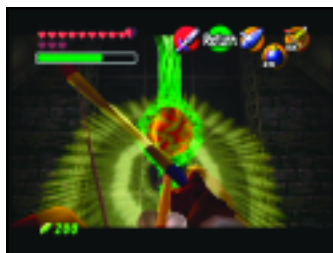
4 FINISH YOUR COLLECTION

Jump to the platform below with the switch on it, then equip your Iron Boots. The switch will raise a Hookshot point underneath the Silver Rupee floating in the air nearby. Use the Longshot to reach the Hookshot point and climb up to collect another Silver Rupee. Equip your Kokiri Boots and jump to the ledge with the locked door. Watch the fan and wait for it to stop. Quickly jump to the small pillar and back again to collect the last Silver Rupee, unlocking the door.



5 THE FOREST BARRIER

You will see the source of one of the barriers in this room. Shoot a Light Arrow into it to remove the Forest Barrier from Ganondorf's Tower and finish the Forest Chamber. Saria will take the place of the barrier and you will be warped out to the main room.



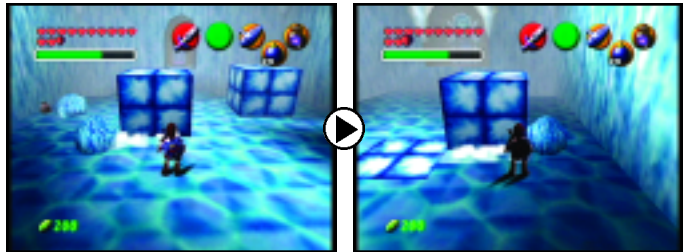
6 BOTTLED BLUE FIRE

Enter the door with the Water Medallion above it. Defeat the Freezards in the room to unlock the door behind the barrier of red ice, then collect the small treasure chest on the right side. The small treasure chest on the left is a trap -- it will encase you in ice. Break up the stalactites surrounding the Blue Fire and fill up an empty bottle. Remove the red ice in front of the unlocked door, then get a refill of Blue Fire before entering the next room.



7 PUSHING ICE CUBES

The goal in this room is to remove the red ice blocking a rusty switch that unlocks the door. You have a two-minute time limit. To reach the red ice you must position a movable ice block underneath the red ice. If you push one of the blocks into the wrong position, you can use the bottomless pit in the corner of room to reset the block. First, push the movable ice block closest to the locked door against the ice boulder, then push it into the hole in the middle of the floor. Push the other movable ice block over the previous ice block, which is now flush with the floor. An ice boulder will stop the block. Push it against the other ice boulder, then once again across the room. It will stop underneath the red ice. Climb up and melt the red ice with the Blue Fire and activate the rusty switch with the Megaton Hammer. The door will unlock, allowing you to enter the next room.



8 THE WATER BARRIER

Shoot a Light Arrow into the Water Barrier to remove it from Ganondorf's Tower and finish the Water Chamber. Princess Ruto will take the place of the barrier and you will be warped out to the main room.



9 CREATING A PATH

Enter the door with the Shadow Medallion above it. Play the Song of Time on the left side of the ledge to reveal some Time Blocks. From the Time Blocks, jump to the nearby ledge and collect the loot in the small treasure chest. Return to the entrance and shoot the unlit torch to your right to make a path of clear blocks appear for a limited amount of time. Take the path of clear blocks, dodging the Green Bubble along the way, and stop at the next ledge.



10 TO THE NEXT LEDGE

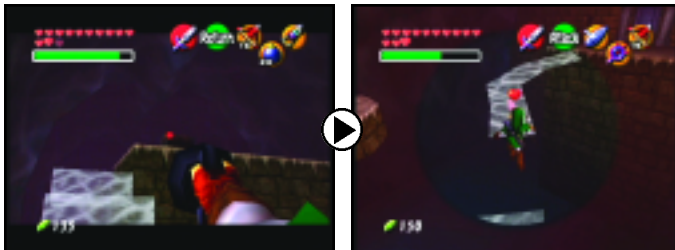
Defeat the Like Like with Bombs or a Fire Arrow, then light the torch you lit earlier with a Fire Arrow to reveal the clear blocks again. Jump to the next platform and activate the Lens of Truth. It will reveal two narrow paths leading off the ledge. Take the left path to the switch at the end. Activate the switch to unlock the next door, then follow the path back to the ledge.



11 THE GOLDEN GAUNTLETS



Reveal the clear blocks once more. This time, light the torch next to the door you just unlocked. It will do the same thing as the previous torch, which is now out of range. Quickly follow the steps created by the clear blocks to reach the switch below. Activate the switch to reveal a large treasure chest. Instead of revealing the clear blocks again, target the large treasure chest with your Longshot to pull yourself to it. Collect the Golden Gauntlets, then activate the Lens of Truth. Take the narrow path, jumping the gap in the middle, and enter the last room of the Shadow Chamber.



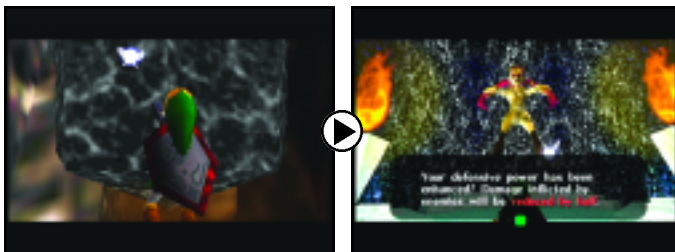
12 THE SHADOW BARRIER

Shoot a Light Arrow into the Shadow Barrier to remove it from Ganondorf's Tower and finish the Shadow Chamber. Impa will take the place of the barrier and you will be warped out to the main room.



13 THE LAST GREAT FAIRY

Before you enter the next chamber, exit Ganon's Castle. Cross the rainbow bridge and take a left. The strength of the Golden Gauntlets will allow you to remove the giant boulder at the end of the path. Inside, summon the Great Fairy by playing Zelda's Lullaby. She will enhance your defensive power by reducing the amount of damage enemies inflict on you by half. A white outline around your health will signify the increase in defense. Return to Ganon's Castle.



14 COLLAPSING CHAOS

Equip your Goron Tunic and enter the door with the Fire Emblem above it. Most of the platforms in this room will sink once you walk on them. They will return to their original position after you've jumped off. Collect all of the Silver Rupees to unlock the door on the other side of the room.



First, jump onto the platform in the middle of the room, then to the platform to your right. Collect the Silver Rupee and return to the middle platform. Time a jump between the rotating blasts of fire onto the ledge on the opposite side of the room. Collect another Silver Rupee and return to the middle platform.



Head to the ledge with the giant movable block. Throw the block across the room to reveal another Silver Rupee. Collect it and return to the lowering platform again. Follow the path to the ledge with the Torch Slug on it. Defeat the Torch Slug, then collect the Silver Rupee. The giant block you removed from the other side of the room created an extra surface, allowing you to reach the final Silver Rupee on a remote ledge. Return to the middle platform and target the Hookshot point next to the unlocked door. Pull yourself over before the middle platform sinks into the lava, then enter the next room.



15 THE FIRE BARRIER

Shoot a Light Arrow into the Fire Barrier to remove it from Ganondorf's Tower and finish the Fire Chamber. Darunia will take the place of the barrier and you will be warped out to the main room.



16 THE LIGHT CHAMBER

The giant boulder blocking the Light Chamber is no match for the Golden Gauntlets. Remove the giant boulder and enter the first room.



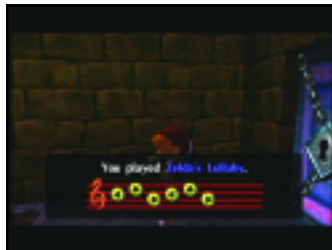
17 ENEMIES IN HIDING

Activate the Lens of Truth to spy the invisible Skulltula and Keese in the room. Defeat all of them to reveal a small treasure chest in the middle of the room. Inside you will find a Small Key. Collect the rest of the loot from the circle of small treasure chests. Half of them are traps that will encase you in ice, so if your health is low don't worry about the extra loot. Use the Small Key to unlock the door to the next room.



18 ANOTHER KEY

You will need a Small Key to unlock the next door. Play Zelda's Lullaby on the Royal Crest engraved on the floor. A small treasure chest will drop nearby. Inside is a Small Key that you can use to continue to the next room.



19 HIDE AND SEEK

Collect the five Silver Rupees within one minute to unlock the next door. First, use your Longshot to collect the Silver Rupee in the center of the room. The rest can be found around the middle structure and the alcoves along the walls. Dodge the rolling boulders and collect all of the Silver Rupees to unlock the door and enter the next room before time runs out.



20 SEE THE TRUTH

The room appears to be a dead end until you take another look with the Lens of Truth equipped. It will reveal a secret passage in the far wall. As you enter the secret passage, watch out for the Wallmaster.



21 THE LIGHT BARRIER

Shoot a Light Arrow into the Light Barrier to remove it from Ganondorf's Tower and finish the Light Chamber. Rauru will take the place of the barrier and you will be warped out to the main room.



22 THE FINAL CHAMBER

Enter the door with the Spirit Medallion above it. Collect all of the Silver Rupees to unlock the door to the next room. Pull the Armos statues toward the middle of the room to give the moving spikes more breathing room. This will make it easier to collect the Silver Rupees. Defeat the Beamos and use the Longshot to collect the two Silver Rupees in the center of the room, then collect the rest of the Silver Rupees. If you play the Sun's Song in the middle of the room, you will reveal a Fairy.



23 HITTING SWITCHES

In the next room, defeat the Torch Slugs, then use a spin attack to activate the Crystal Switch on the other side of the bars. This will reveal a small treasure chest nearby. Send a Bombchu through the hole in the top of the bars to activate the other Crystal Switch, unlocking the door. It may take a few tries to get the aiming right. Go through the unlocked door and enter the second part of this room.



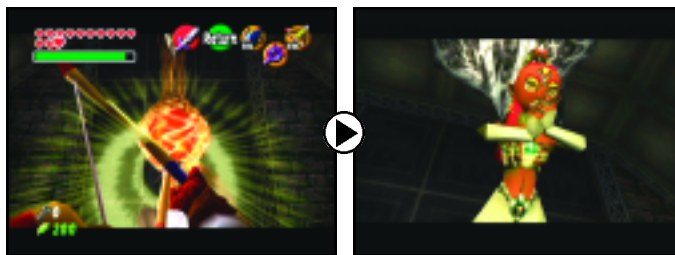
24 POWER OF THE SUN

Use a Fire Arrow to burn away the cobwebs blocking the window in the ceiling, allowing sunlight to enter the room. With the Mirror Shield, reflect the sunlight onto the sun symbols on the walls. One of them will unlock the door to the last room of the Spirit Chamber, the others will drop Wallmasters into the room.



25 THE SPIRIT BARRIER

Shoot a Light Arrow into the Spirit Barrier to remove it from Ganondorf's Tower and finish the Spirit Chamber. Nabooru will take the place of the barrier and you will be warped out to the main room. The barrier surrounding Ganondorf's Tower will disappear, allowing you to walk right in.



BROUGHT TO YOU BY:



FOR SUBSCRIPTION INFORMATION, VISIT:
http://www.nintendo.com/news/news_power_promo.jsp