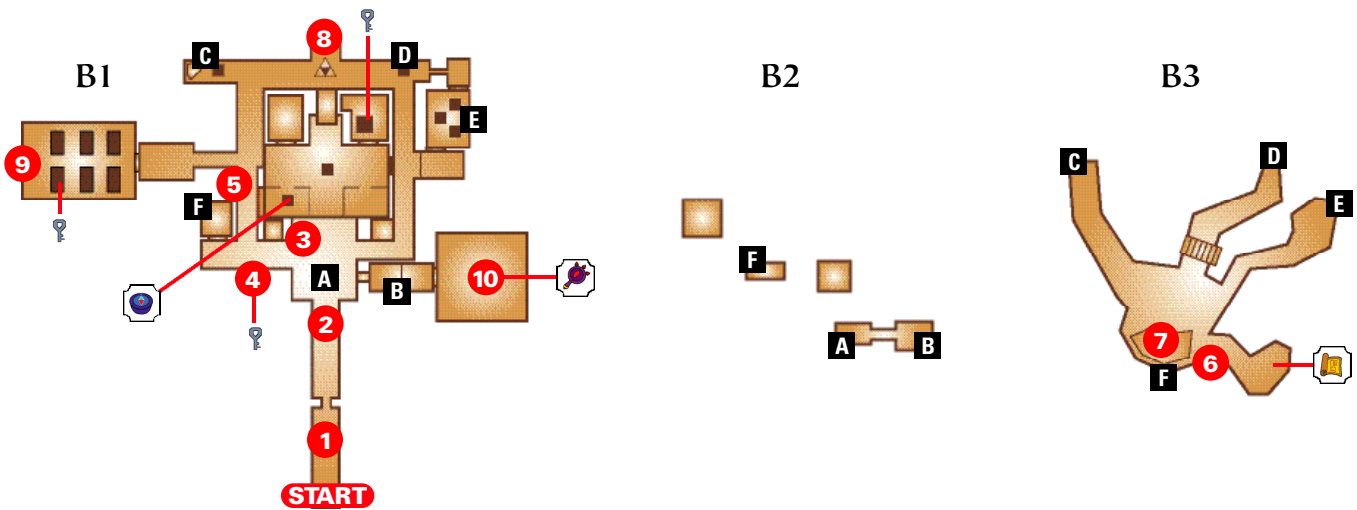




### Kakariko Well Map



**Map Key** 1 Strategy Callout A Floor Connection Map Compass Lens of Truth

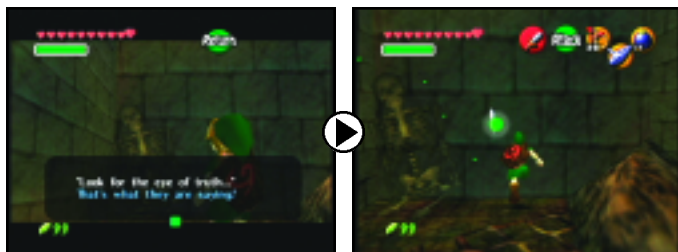
#### 1 LITTLE LINK

At the bottom of the well, crawl through the narrow hole. Once you've reached the other side of the wall climb down and defeat the Skulltula with your slingshot when it exposes its back.



#### 2 THE BONES SPEAK

As you walk past where you destroyed the Big Skulltula, Navi will tell you to seek the Lens of Truth. This path appears to be a dead end, but you can walk forward through the wall directly ahead. The walls and floors in the Kakariko Well contain holes which can only be seen with the Lens of Truth.



#### 3 HIDDEN TREASURE

On the other side of the wall you'll see a small pool and a stream of water. In the left corner of this room is a pile of bones. Place a Bomb on the pile to reveal a hidden room below. In the hidden room you'll find a small chest containing some Bombchus. Climb the vines near the opening to exit this area.



#### 4 GREEN BUBBLES AND SMALL KEYS

After exiting the hidden room, take a right and walk through the wall again. Open the treasure chest in this area to find another Small Key.



**5 FIND THE COMPASS**



Leave the hidden room and take a right following the stream. Along the corridor on the right you'll find two secret rooms. The second room contains a large treasure chest which holds the Compass. There is a hidden hole on the ground in front of the chest, so be sure to stay as close as possible to the chest when opening it. With Compass in hand, turn and fall down the hidden hole in the ground leading to the basement.



**6 TO THE MAP**



On your left, there is a doorway which is lit by two yellow torches. Use a Bomb to destroy the boulders blocking your path and destroy the ReDead. Open the treasure chest to get the Dungeon Map.



**7 BACK TO FLOOR 1**



Head back to where you fell down at Callout 6. Carefully cross over the toxic water and collect the three Silver Rupees along the way. Watch out for the ReDead near the toxic water. Climb the ladders and collect the two remaining Silver Rupees to unlock the barred doors above. Next, walk through the wall opposite the three pots to appear back in the main area.



**8 THE STRANGE STATUE**

You'll emerge near Callout 4 in the main area. Head down the corridor until you reach a painting. Destroy the Skulltula that falls down, then walk along the left wall to avoid a hidden hole as you make your way toward the pile of bones. Blow up the bones with a Bomb to reveal a chest holding Deku Nuts. Turn around and hug the wall again to pass by another hidden hole in the floor. Follow the stream straight ahead until you reach the statue with water pouring out of its mouth. Just below the statue, you'll see the Triforce symbol. Pull out the Ocarina, stand on the Triforce and play Zelda's Lullaby to stop the water flow.



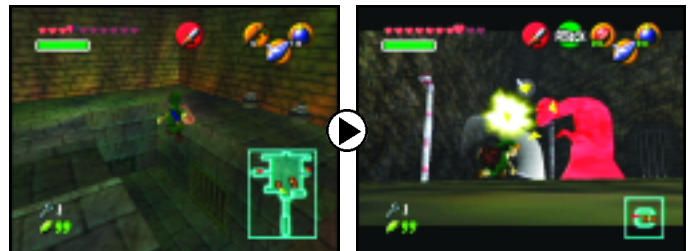
**9 REACH THE TOMBS**

Return the way you came and you will see a hallway to your right. Take a right and drop down the hole. Inside, you'll find a chest holding a Heart. Climb up the vines and enter the room containing the six tombs. One of the tombs will be open and you'll see a Heart resting inside. To get to it, you'll have to fight a Gibdo. Lock onto it and swing your sword, but keep your distance or it will suck the life out of you. To open the other tombs, use a lighted Deku Stick to light the other torches. Most of the tombs contain monsters. You'll find a Small Key in the left tomb in the back. Once you've collected the Small Key, head back out to the main room near Callout 2.



**10 GET THE LENS OF TRUTH**

The water has now drained from the pool in the main room near Callout 2. Drop down the hole, grab the Bombs from the chest and crawl through the small opening on the opposite site. Eliminate the Skulltula and enter iron door. Behind the door, you'll have to battle a Dead Hand. Walk close to one of the arms and let it grab you. Once it's got a grip on you, a Dead Hand will surface from the ground. Shake yourself free and find a safe spot away from the protruding arms. L-Target the Dead Hand and let it get close to you. As the Dead Hand lowers its head, swipe with your sword until it retreats. Repeat this process, letting another arm grab you, until the Dead Hand is defeated. Open the chest which appears to get the Lens of Truth. Use the Lens of Truth in this chamber to discover a treasure chest with a huge Rupee worth 200 Rupees. Head back out to the main room.



**11 A SMALL KEY**

Make your way out of the room where you found the Lens of Truth and back to the main floor. Follow the right path along the stream and use the Lens of Truth just around the corner to reveal a Small Key hidden behind a wall. Keep in mind that your magic power is slowly drained away as you use the Lens of Truth. Head down the corridor and use the Lens of Truth on the right side to find a small opening near the bottom of the wall. Make your way through the opening and unlock the door with the Small Key. Enter the room with the Lens of Truth activated to avoid the huge holes in the ground.



**12 MORE TREASURE**

Carefully destroy the Fire Keese and Beamos. In the corner of the room you'll find a chest holding a Deku Shield, and on the right side of the chest is a door. On the other side, there is a gated room with a Like Like inside. Destroy it with Bombs and open the chest to get a Blue Rupee.



**13 THE HAND FROM ABOVE**

You can now enter the center room by using the Lens of Truth. You should have enough Small Keys to unlock the doors that contain hidden treasures. Most of the extra rooms contain Skulltulas. For more information on collecting all the Skulltulas, see the Secrets section of this website.



BROUGHT TO YOU BY:



FOR SUBSCRIPTION INFORMATION, VISIT:  
[http://www.nintendo.com/news/news\\_power\\_promo.jsp](http://www.nintendo.com/news/news_power_promo.jsp)