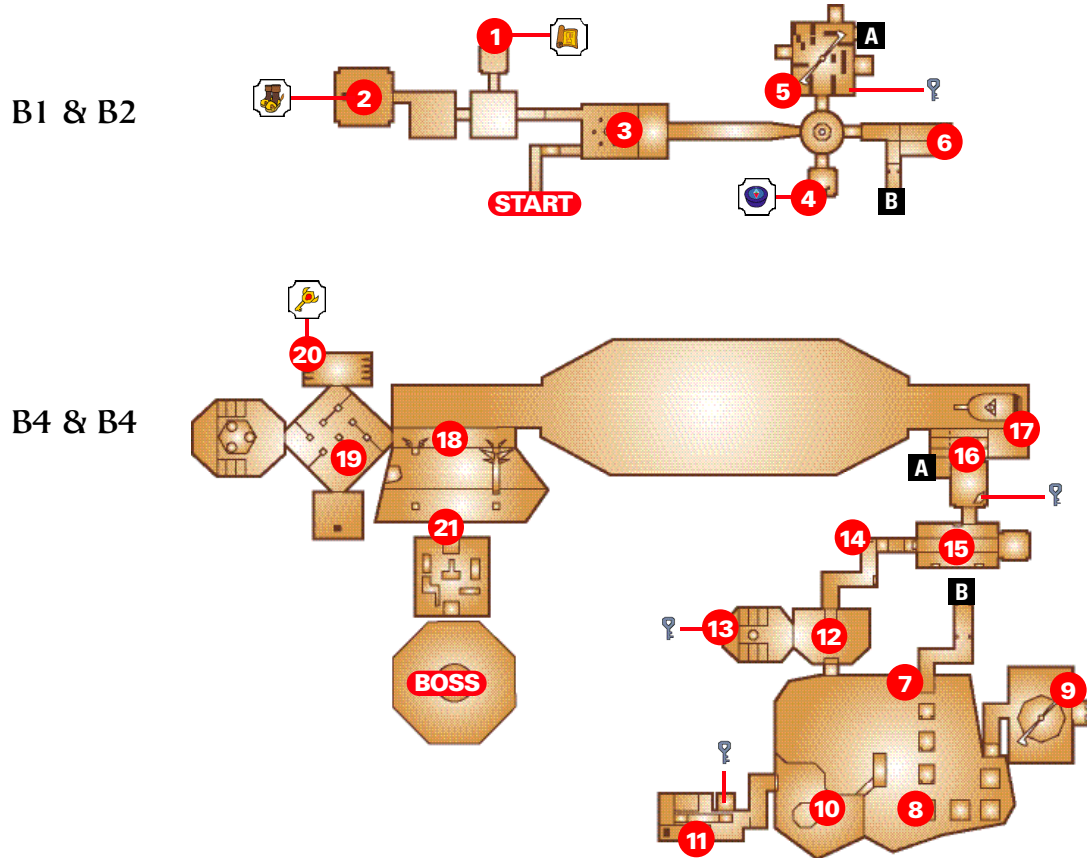




Shadow Temple Map



MapKey 1 Strategy Callout A Floor Connection Map Key Boss Key Compass Hover Boots

1 GET THE MAP

When you arrive at a large gap in the walkway, use your Longshot to cross over. Use the Lens of Truth in the left corner of the next room to enter a hidden doorway. To your right, you'll find another hidden doorway. Defeat the ReDead and Keese, then open the chest to get the Dungeon Map.



2 GET THE HOVER BOOTS

Exit the room and look for a hidden doorway between the two pots. When you enter the next room will have to face a Dead Hand. Let a protruding arm grab you to make the Dead Hand reveal itself. Wait for it to get close to you and drop its head before striking. Repeat until it is defeated, then open the chest to get the Hover Boots.



3 BIRDS OF PREY

Head back to the room with the bird statue. Examine all of the skulls on the pedestals. The one that does not disappear through the Lens of Truth is the real thing. Rotate the statue so the beak points to the skull of truth, and the gate in the mouth across the chasm will open. Strap on the Hover Boots and cross over the gap to the door that just unlocked on the other side of the room.



4 GET THE COMPASS



At the end of the hallway you will face a Beamos. Throw two Bombs near its base to destroy it. Walk through the wall to your right and defeat the two Gibdos in the next room. Open the chest which appears to get the Compass.



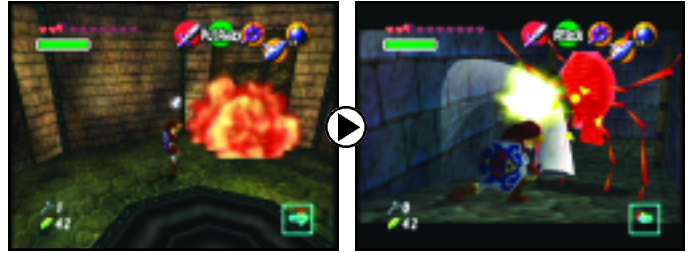
5 SPINNING BLADES

Head back into the room with the Beamos and walk through the wall on the opposite side. You will enter a room with dangerous spinning blades. Your goal is to grab the five Silver Rupees placed throughout the room. If a blade gets too close, you can try to duck beneath it. Once the Silver Rupees are collected, the door will unlock and you can collect the first Small Key.



6 REACH THE BASEMENT

Head back once again to the room with the Beamos. Use a Bomb to destroy the left wall. Walk through the hole and use a Small Key on the locked door. Walk through the door to reach the basement. Watch out for the Skulltulas and make your way past the swinging blades.



7 WALLMASTERS AND BUBBLES

When you enter the room with the large pit, you'll have to keep moving to avoid the Wallmaster. If the Wallmaster grabs you, it will take you back to the entrance. Eliminate the Red Bubble by stunning it with a Deku Nut and striking it with your sword.



8 THE STALFOS

At this point you will face one of the toughest creatures in the game - the Stalfos. The only weapon that works against the Stalfos is your sword, but the enemy is very good at blocking your attacks. Lock onto it and try not to fall off the ledge. The only time you can attack successfully is when its guard is down right before it takes a swing at you. After it has been defeated, use the Lens of Truth to locate the hidden platforms in this room. Use the platforms to reach the door on the left side of the room.



9 LIKE LIKE AND MORE

In the next room you'll need the Lens of Truth to keep track of the spinning blade in the middle of the room. Destroy the three Keese in the room, then face off against the Like Like. Destroy it with Bombs, then open the two chests to receive Rupees and a bundle of arrows.



10 HOVER ON OVER

Head back to where you fought the first Stalfos. Equip the Hover Boots and wait for the platform hooked up to a pulley to drop below. Once it drops, hover over to it and try not to slide off its edge. Wait until it fully raises and hover over to the ledge where the Beamos is located. Use a Bombchu to destroy the Beamos, then collect the Silver Rupee that appears. Run around and collect the other Silver Rupees on this ledge, then exit through the door that opens.



11 A DANGEROUS TRAP

Just ahead, you will see two spiked platforms rising and falling from above. Stand in front of them and use the Lens of Truth to see a brown block in the wall. Pull it out the block and push it under the falling spikes to the end of the path. Climb on top of the block and then jump onto the top of the spiked platform. Jump to the next platform, and on your right you'll spot a switch. Press the switch to make a chest appear which holds another Small Key.



12 HIDDEN SPIKES

Head back to the ledge with the Beamos, and look for a skinny ledge in the upper-left corner. Make your way to this ledge and use the Lens of Truth to see two hidden platforms which lead to a door. In the next room, use the Lens of Truth to keep an eye out for the spikes on the ground. When you eliminate the two ReDead in this room, a chest will appear which contains Rupees. Use the Lends of Truth and the Longshot to collect the Silver Rupees, then exit through the unlocked door on the left side of the room.



13 TOSS BOMBS

Climb to the top of the stairs behind the giant skull with the blue flaming head. Destroy the four Keese, then pluck the Bomb Flowers and toss them into the center of the blue flame on top of the giant skull. Grab the Small Key which appears. Go back into the previous room and use the Lens of Truth and Longshot to make your way to the upper ledge. Use your Small Key to enter the locked door.



14 STRONG WINDS AHEAD

In the next room you will notice fans on the sides of the walls. Equip your Iron Boots to withstand the wind and make your way to the end of the hall. Before you enter the room, you'll need to use your Longshot on the wood beam above to cross over the gap.



15 A LITTLE PUSH

There are fans on either side of the narrow path. Keep the Iron Boots equipped and eliminate the Fire Eye above the door. Use the Lens of Truth to look to the left, and you'll spot another hidden door. Use the Hover Boots to reach this doorway.



16 HIDDEN TREASURE

Destroy the two Gibdos in the next room, then place a Bomb on the pile of bones. When the Bomb explodes, a chest will appear with a Small Key. You'll have to use the Lens of Truth to see this chest. Grab the Small Key then exit on the other side of the room.



17 SAIL THE SEAS

To the right you will notice a staircase that is just out of reach. To the left there is a brown block. Push and pull the block over to the bottom of the stairs until it locks into place. Climb onto block then take the stairs to get onto the boat. Play Zelda's Lullaby near the Triforce symbol to get the boat started.



18 WALK THE PLANK

On your short boat ride you will be forced to battle two Stalfos. They will try to distract you, but it's more important to keep an eye out for dry land. The boat will sink once it reaches its destination. With the Hover Boots equipped, make your way to safety when the boat starts to sink.



19 ANOTHER SMALL KEY

Walk through the door on the right. In the next room, there are many invisible walls which you can only see through the Lens of Truth. Fight your way through the Floormasters, then use the Lens of Truth to spot a Wallmaster in the left corner of the room. Destroy the Wallmaster to make a chest appear with a Small Key.



20 THE BOSS KEY

Directly on the other side of the room is a door leading to the Boss Key. When you enter the room, spiked walls will begin to close in on you. Use Din's Fire to eliminate the walls, then take out the ReDead enemies. Open the chest on the right side of the room to get the Boss Key, then head back to where you jumped off the boat.



21 GETTING TO BONGO-BONGO

You'll have to cross a gap to get to the Boss. Use your Fire Arrows to the light BombFlowers. When the Bomb Flowers explode, the statue will fall over and create a bridge. Enter the locked door on the other side and use the Lens of Truth and Hover Boots to reach the Boss door.



BOSS **BATTLING BONGO BONGO**

Through the door, jump on the ledge to lower it to the previously inaccessible door below. Hit the cow with your Fairy Slingshot to reveal a small treasure chest, then head through the next door. Defeat the Like Likes in the room, then target the two cow heads in the wall with your Fairy Slingshot. The left cow will drop a small treasure chest. Hit the right cow head to make it rise. A second hit will make it rise again. The third shot will unlock the door to the Boss.



BROUGHT TO YOU BY:

NINTENDO
POWERFOR SUBSCRIPTION INFORMATION, VISIT:
http://www.nintendo.com/news/news_power_promo.jsp